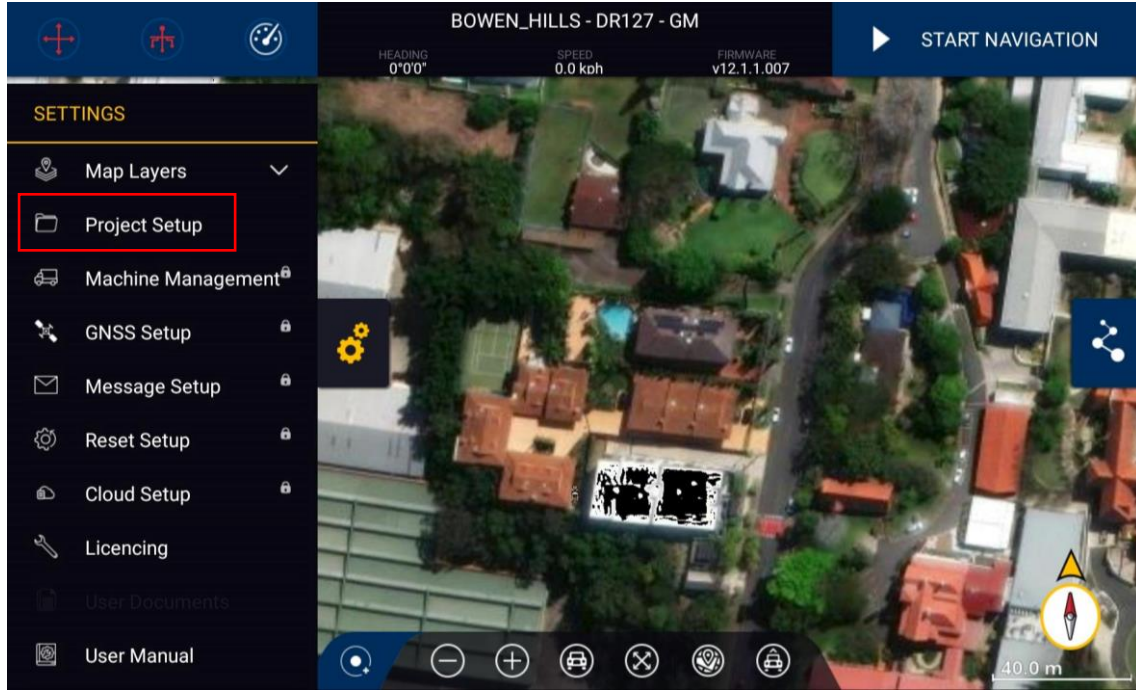


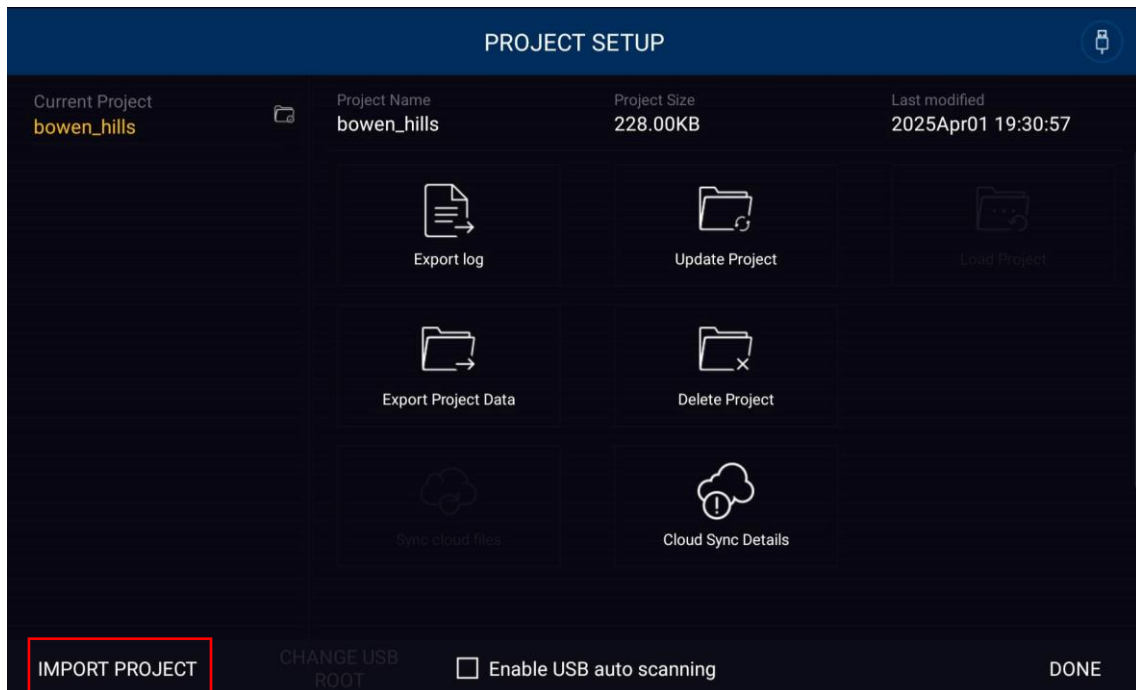
Importing a GuidEx Project

Open Left Hand Drawer (Cogs)

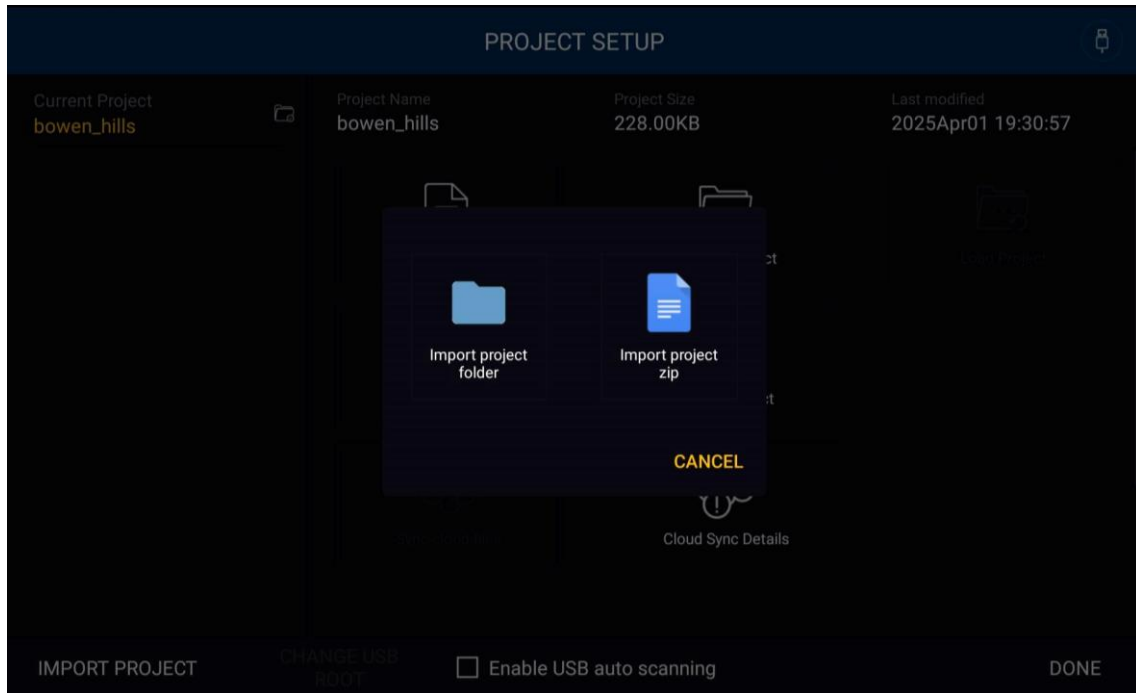
Open the left hand drawer menu and select "Project Setup"



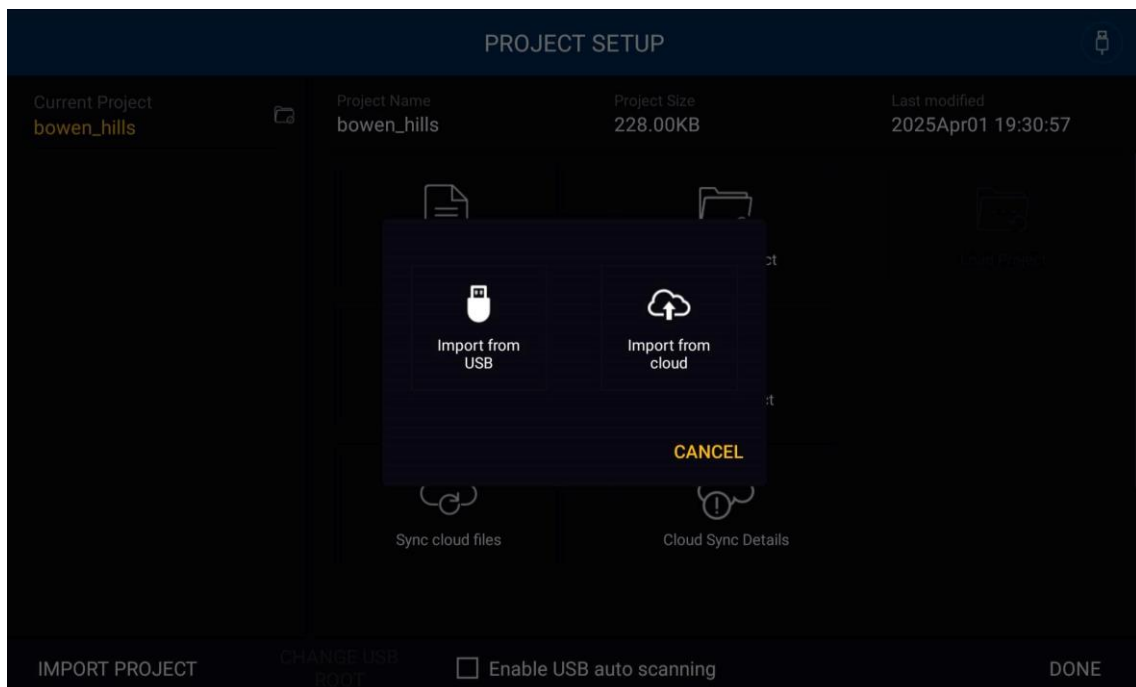
Select "Import Project"



Screen Displayed When USB Is Connected



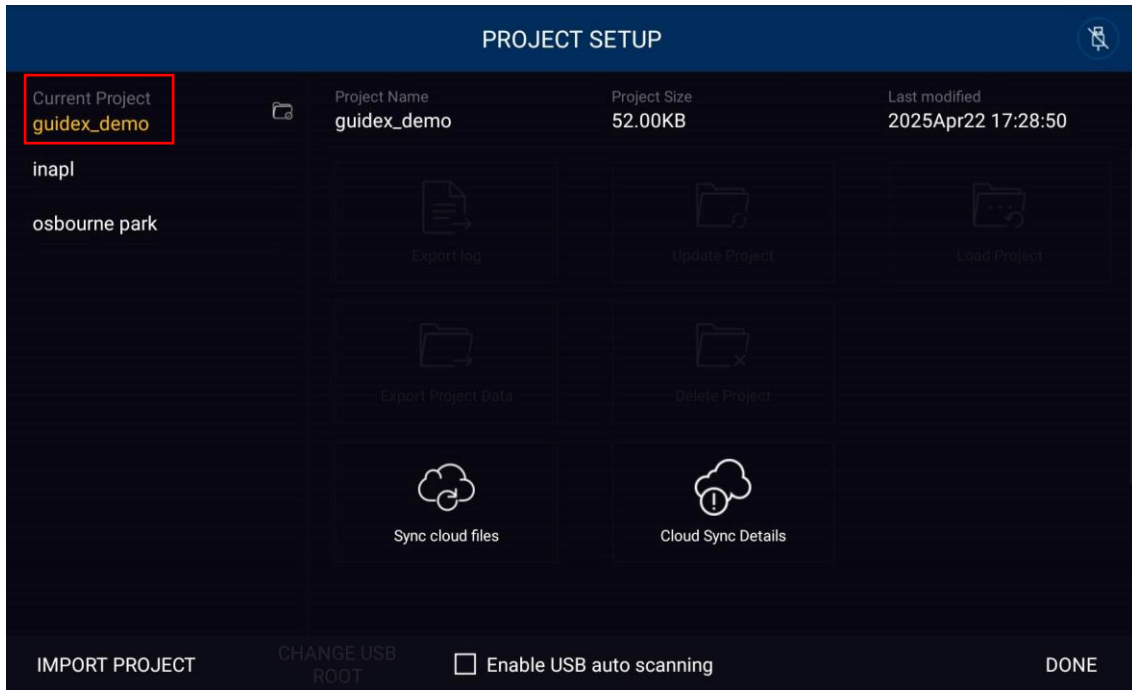
Screen Displayed When Sync'd To GuidEx Connect



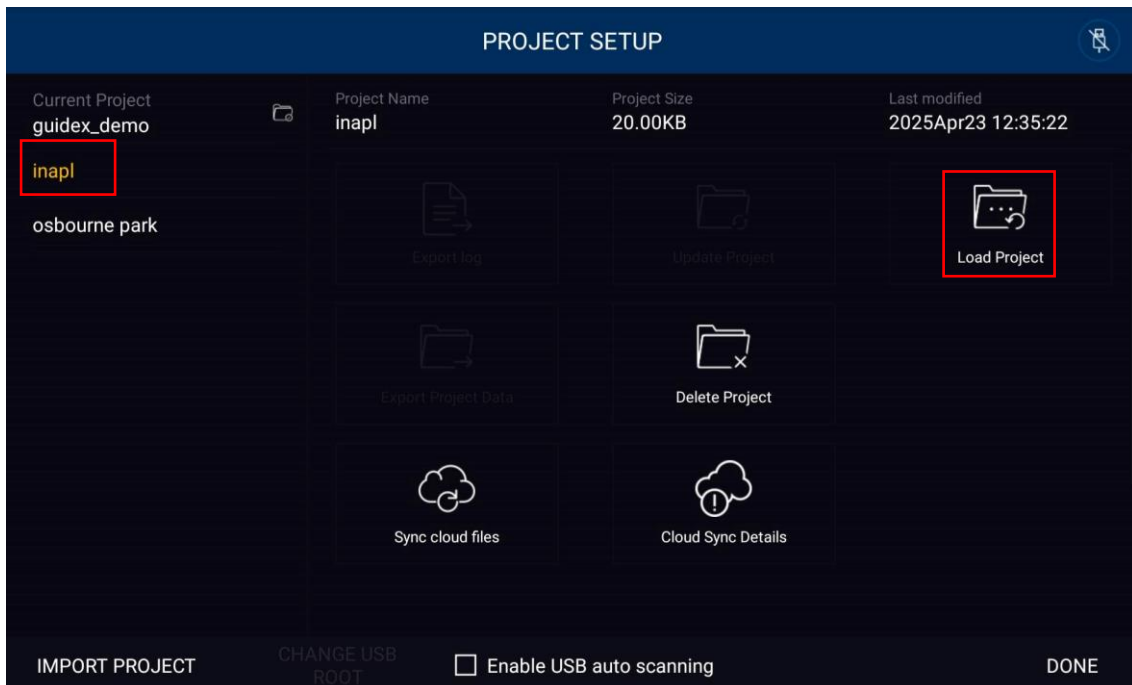
Navigate to project file path on USB device, or select project if fetched from the cloud. Once the Project has been copied onto the tablet, tap on the newly copied project and select "Load Project" at right of screen. GuidEx will restart and load into the new project.

Loading a GuidEx Project

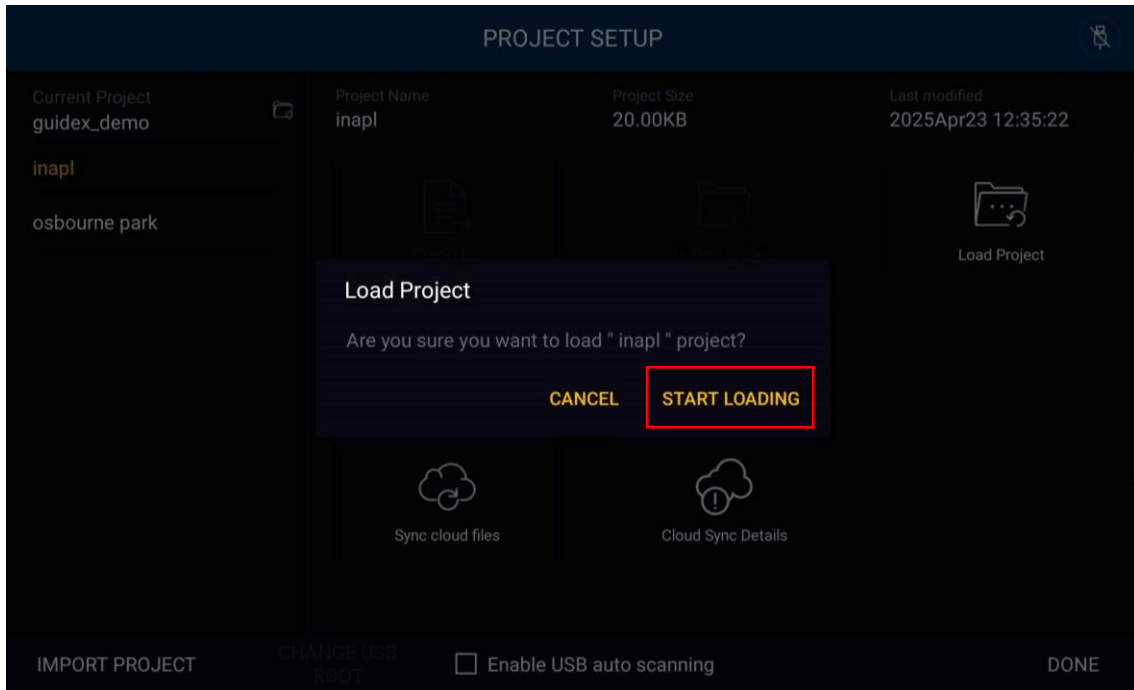
Current project selected



Select new or existing project and press "Load Project"



Confirm project load



GuidEx will restart and the newly selected project will now be active

